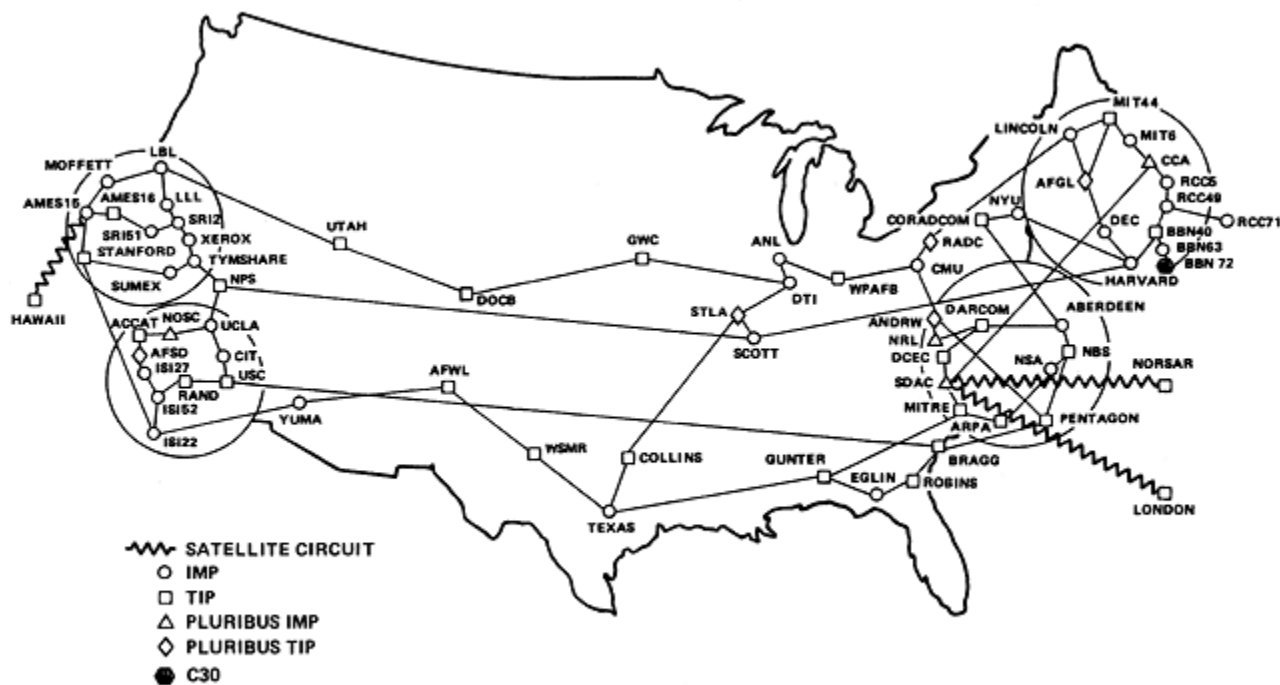


d

# ARPANET

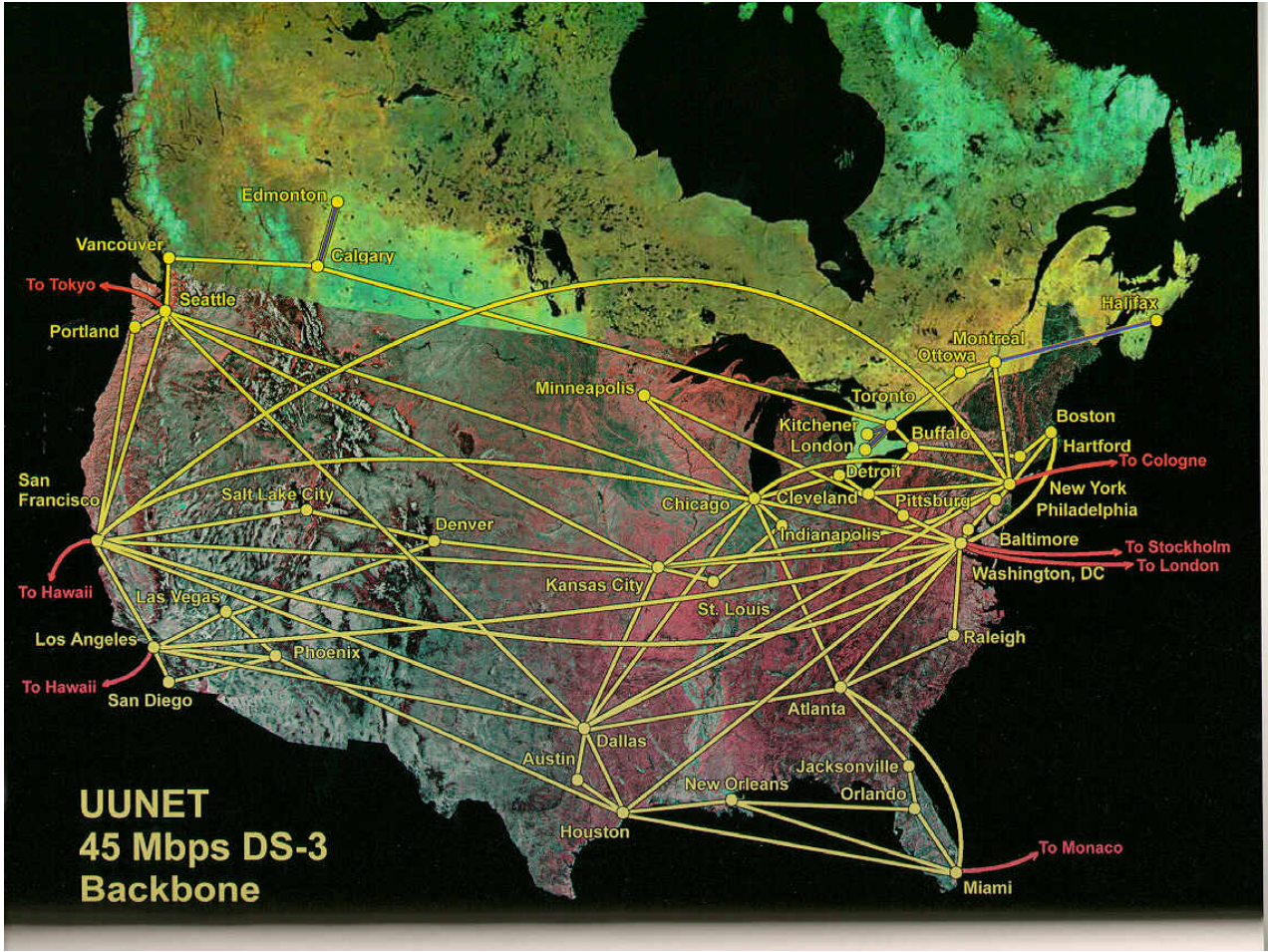
(Advanced Research Projects Agency)

ARPANET GEOGRAPHIC MAP, OCTOBER 1980

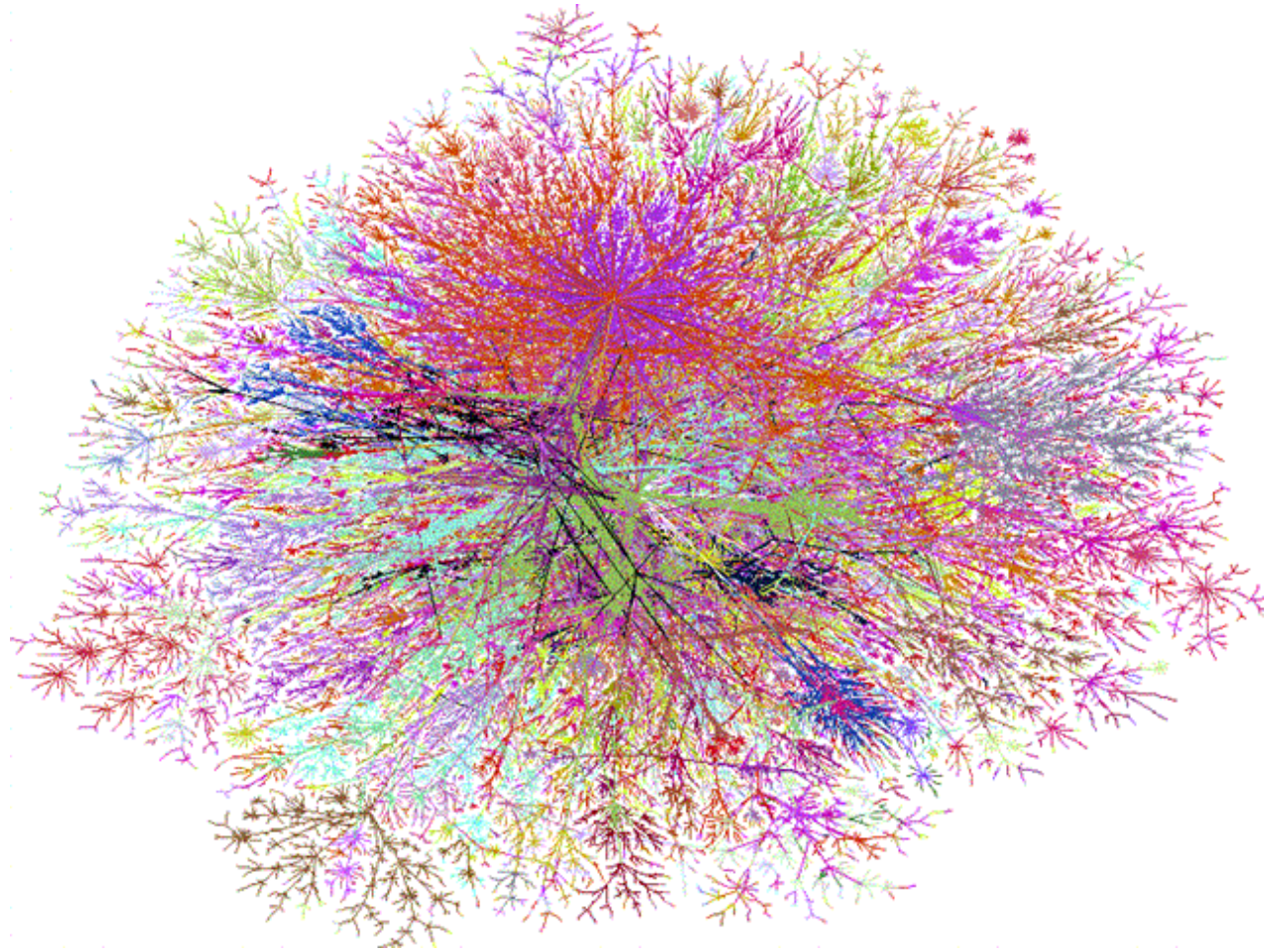


(NOTE: THIS MAP DOES NOT SHOW ARPA'S EXPERIMENTAL SATELLITE CONNECTIONS)  
NAMES SHOWN ARE IMP NAMES, NOT (NECESSARILY) HOST NAMES

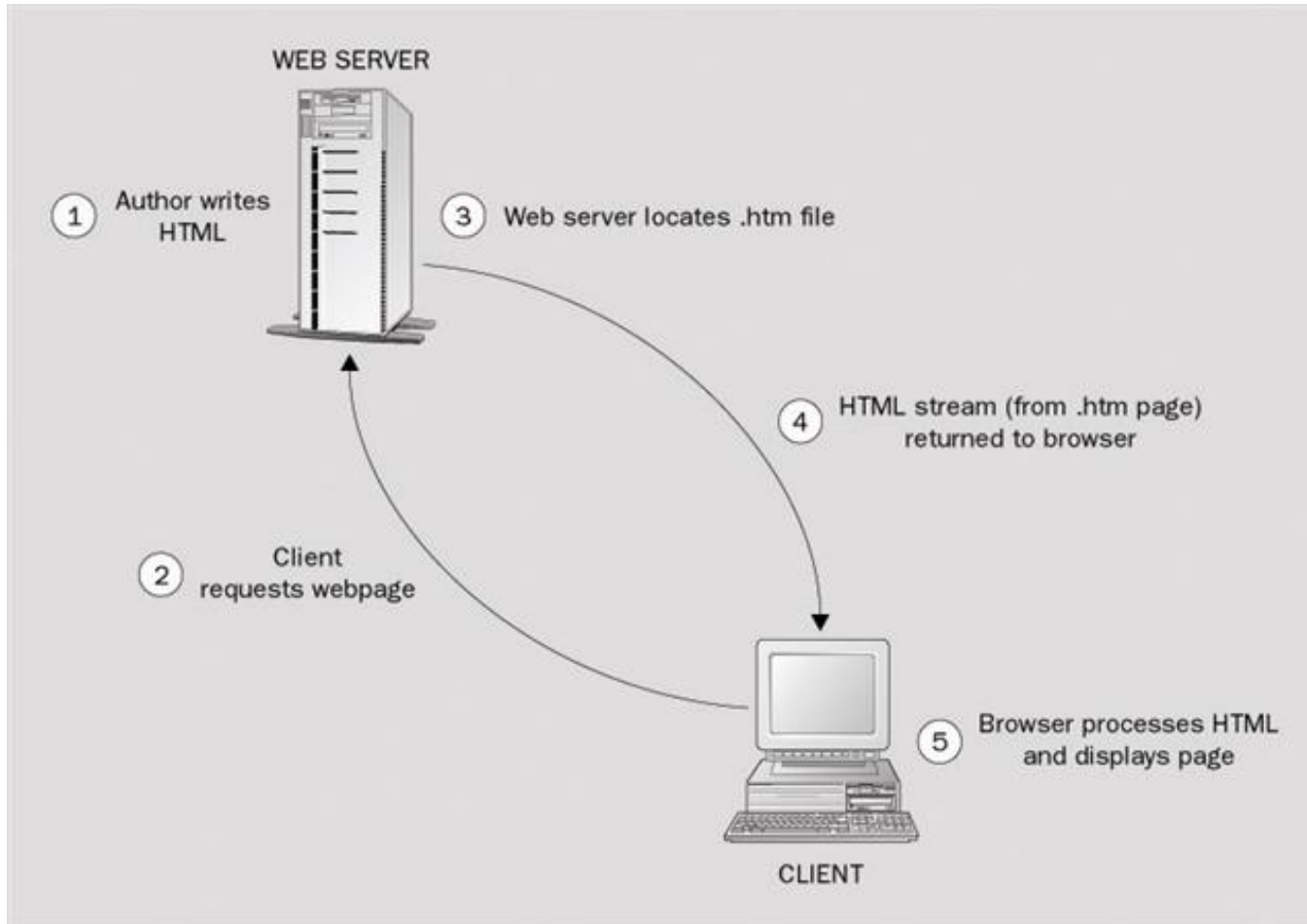
# UUNET



# Map of the Internet, 1998



# Clients and Servers





# IP Addresses

216.239.41.99 vs. google.com

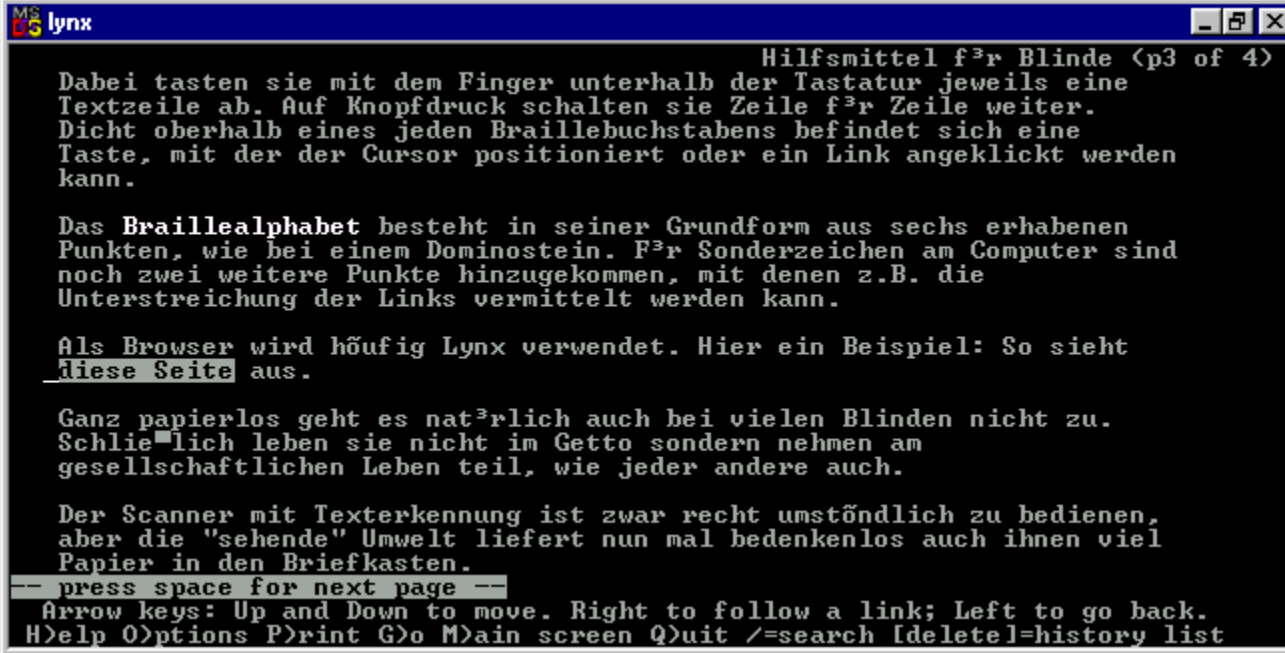
**Thank God for DNS.**

# Anatomy of a URL

<http://www.wmich.edu/labs/design.html>

- ◆ http:// Protocol
- ◆ www Host Name
- ◆ wmich Domain Name
- ◆ .edu Top Level Domain Name
- ◆ /labs/ directory (folder)
- ◆ design.html filename

# LYNX



```
MS lynx
Hilfsmittel f³r Blinde (p3 of 4)
Dabei tasten sie mit dem Finger unterhalb der Tastatur jeweils eine
Textzeile ab. Auf Knopfdruck schalten sie Zeile f³r Zeile weiter.
Dicht oberhalb eines jeden Braillebuchstabens befindet sich eine
Taste, mit der der Cursor positioniert oder ein Link angeklickt werden
kann.

Das Braillealphabet besteht in seiner Grundform aus sechs erhabenen
Punkten, wie bei einem Dominostein. F³r Sonderzeichen am Computer sind
noch zwei weitere Punkte hinzugekommen, mit denen z.B. die
Unterstreichung der Links vermittelt werden kann.

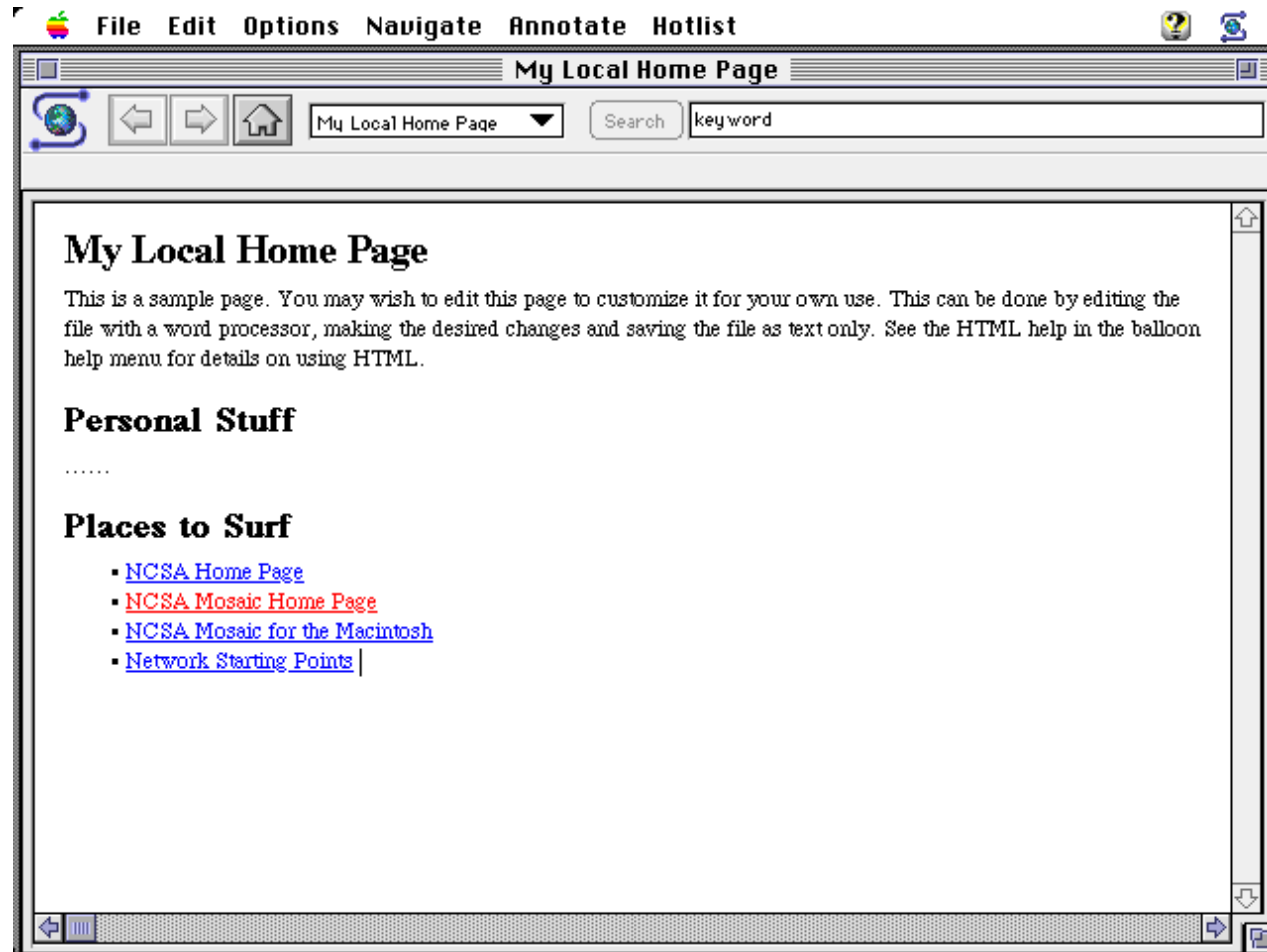
Als Browser wird h³ufig Lynx verwendet. Hier ein Beispiel: So sieht
diese Seite aus.

Ganz papierlos geht es nat³rlich auch bei vielen Blinden nicht zu.
Schlie³lich leben sie nicht im Getto sondern nehmen am
gesellschaftlichen Leben teil, wie jeder andere auch.

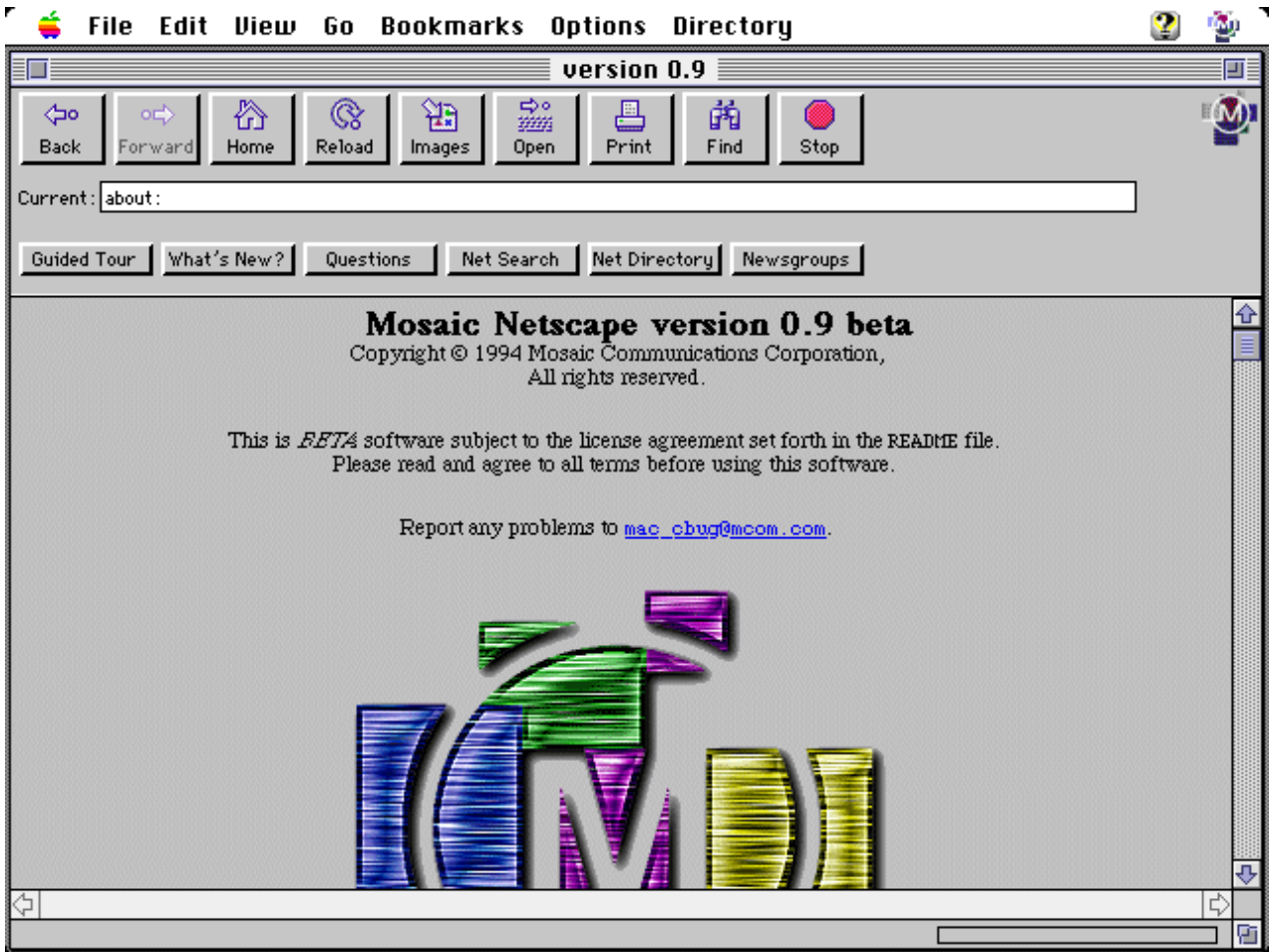
Der Scanner mit Texterkennung ist zwar recht umst³ndlich zu bedienen,
aber die "sehende" Umwelt liefert nun mal bedenkenlos auch ihnen viel
Papier in den Briefkasten.
-- press space for next page --
Arrow keys: Up and Down to move. Right to follow a link; Left to go back.
H)elp O)ptions P)rint G)o M)ain screen Q)uit /=search [delete]=history list
```



# Mosaic



# Netscape



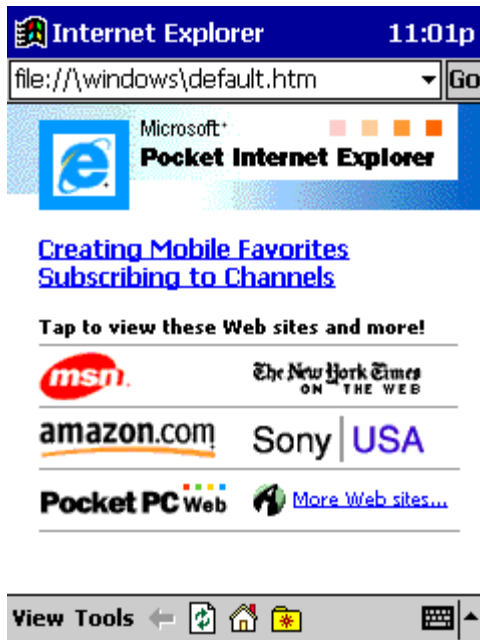
# Today

The screenshot shows a Mozilla Firebird browser window displaying the Kaliber10000 website. The browser's address bar shows the URL <http://www.k10k.net/>. The website's navigation menu includes links for FRONT, ISSUES, NEWS, SPECIALS, and STORE. The main content area is divided into several sections:

- Issue 0129:** Features an article titled "The greater departure" by martin hughes, with a brief summary and issue requirements.
- Specials:** Includes a "KALIBER SPECIALS" section with sub-sections like PHOTOPACKS, ONDISPLAY, and PSLPATTERNS, and a "GLOBAL EVENT LOCATOR" listing upcoming events such as "Public Address System" and "LongLunch, NB: Studio".
- News:** Contains a "NEWSFEED" section with articles like "Selected paid & personal work to date" and "Midwest: The Midwest is thriving with talent".
- Store:** Promotes various items like "KALIBERUOOKU™ BOOZ", "MOODSTATS APP BOOZ", and "NEW K10K TEES BOOZ".
- Backissue 0085:** A link to a previous issue.
- Wulfrimordenthaler's Daily:** A link to a daily update.

The footer of the website contains a disclaimer: "KALIBER10000, K10K AND MOODSTATS ARE TRADEMARKS OF CUBAN COUNCIL. ALL RIGHTS RESERVED © 1998-2003 CUBAN COUNCIL. READ OUR PRIVACY STATEMENT. WHY DO YOU HAVE SPONSORS? CONTACT US. HERE. WANT TO LINK TO US? DOWNLOAD LOGO HERE."

# Mobile Internet



# Webpage recipe:

- ◆ HTML
- ◆ CSS
- ◆ JavaScript
- ◆ Text
- ◆ Images
- ◆ Flash
- ◆ Video
- ◆ PDF
- ◆ Databases
- ◆ Server Scripting
- ◆ Etc., etc., etc.

# HTML

## Hyper Text Markup Language

- ◆ Plain text
- ◆ Made up of a defined set of tags
- ◆ Interpreted by the browser in a default way
- ◆ Used to define the structure of a document

**<html>**

# HTML Tags

- ◆ Opening: `<h1>`
- ◆ Closing: `</h1>`
- ◆ Single: `<br>`
- ◆ Attributes: `<p align="left">`



# HTML Tags

- ◆ Nesting Correctly:

```
<h1>This is <i>easy</i></h1>
```

- ◆ Nesting Incorrectly

```
<h1>This is <i>easy</h1></i>
```

# CSS

## Cascading Style Sheets

- ◆ Similar to style sheets in a page layout program.
- ◆ Define or redefine the look of page elements.
- ◆ Internal (one page) or external (whole site).
- ◆ Provide much more control over visual and typographic elements than HTML alone.

```
p {color: blue; }
```

# JavaScript

Known as “Behaviors” in Dreamweaver

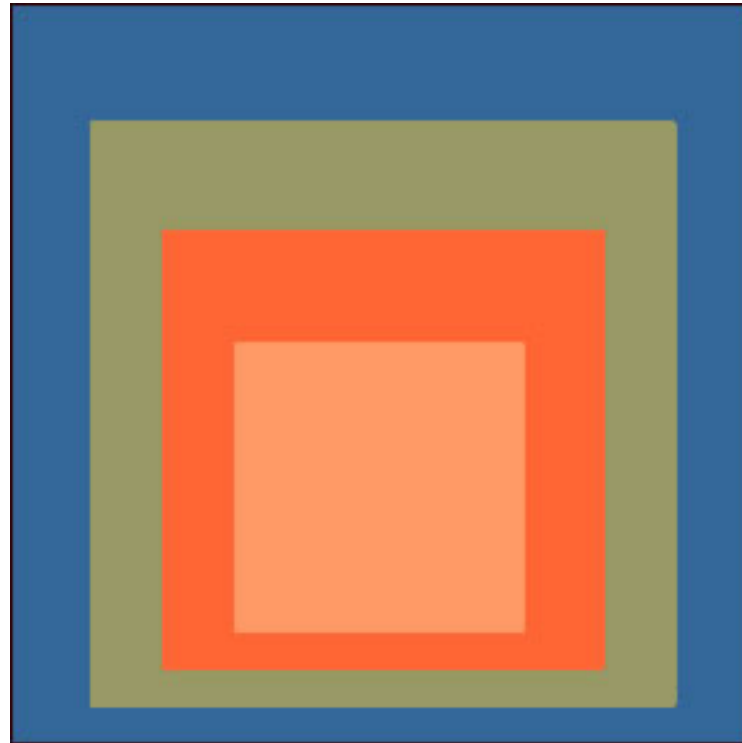
- ◆ Logic based programming language.
- ◆ Adds interactivity to HTML and CSS.
- ◆ Can change things after a page has loaded.
- ◆ Rollovers, timelines, pop-ups, animation.

```
function SayHello() { alert(“Hello”); }
```

# Images

- ◆ GIF, JPEG, PNG.
- ◆ Advantages and disadvantages.
- ◆ Download size / compression.
- ◆ Background images
- ◆ Image maps

# GIF or JPEG



# GIF or JPEG



# GIF or JPEG





# GIF or JPEG



# Text

- ◆ The web is not print.
- ◆ Fonts must be on user's computer.
- ◆ Size can always be changed.
- ◆ Text as image poses problems.

**Sans:** Verdana, Arial, Helvetica

**Serif:** Georgia, Times New Roman, Times

**Mono:** Courier Courier New

# Other Concerns

- ◆ Web color palette
- ◆ Web page dimensions
- ◆ File naming conventions
- ◆ File size limitations
- ◆ Cross platform / cross browser
- ◆ Debugging
- ◆ Hosting your site

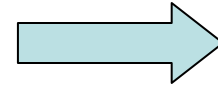
# The Macromedia Workflow



Freehand



Fireworks



Dreamweaver